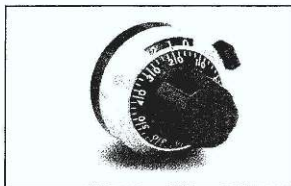


# MODEL 2696

7/8" Diameter

Low Cost Plastic Analog  
Turns Counting Dial



Counting Capacity, Maximum Turns	10
For Shaft Diameter	1/4"
For Bushing Diameter	3/8"
Depth:	Maximum, from Face of Panel 0.900"
Shaft Extension:	Maximum, from Face of Panel 0.781"
	Minimum, from Face of Panel 0.620"
Bushing Extension:	Maximum, from Face of Panel 0.300"
Locking Mechanism	Positive Action
Weight, Nominal	16 Grams
Number of Set Screws	1
Numeral Height	0.050"
Knob Material	Black Plastic
Dial Finish	White Numerals on Black Mate
Housing Finish	Satin Chrome
Operating Temperature Range	-55°C to +71°C

## OUTLINE DIMENSIONS (Inch/mm)

