



Fast Ethernet Media Converter

10/100Base-TX to 100Base-FX (SC) Multi-Mode, 2 km

Model
519120

Easily and effectively expand your network capacity and extend its range with minimal installation effort.

The INTELLINET NETWORK SOLUTIONS™ Fast Ethernet Media Converter was specifically designed to offer the network designer a device for migration from copper-based Ethernet to Fiber Ethernet. Now migration or expansion of existing networks can be achieved with minimum cost and complexity. The converter is completely transparent to the network so the network performs exactly the way it did before — only now it can support both copper and fiber mediums.

Expands the Size of an Existing Network

Provides fiber connectivity to Ethernet segments, allowing for even further networking expansion between extended workgroups. Also provides building-to-building connectivity without the need for the cost and disruption associated with the installation of additional routers.

Enhances the Distance between Networking Devices

Connecting the converter to fiber segments can further extend distances between networking nodes. This can be achieved by direct connection between the converter and a fiber-based node or networking device.

Cabling Flexibility

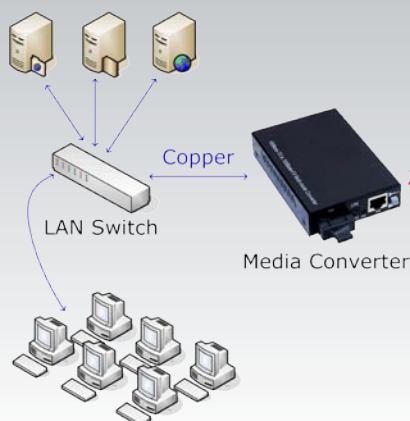
Network managers can install fiber cabling anywhere within a network without changing the arrangement of copper-based Ethernet. The compact size of the converter allows it to be easily deployed in any narrow desktop location or to be used in a wall-mount installation. Several converters can be simultaneously installed into a 19" rack-mountable chassis.

Lifetime Warranty

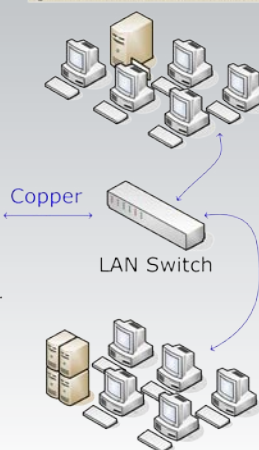
Strict manufacturing standards ensure the highest quality in all INTELLINET NETWORK SOLUTIONS products. All items carry a full Lifetime Warranty — the strongest quality commitment anyone can make.



LAN 1 (Local Area Network)



LAN 2 (Local Area Network)



**LIFETIME
WARRANTY**

**Model
519120**

Features

- Data transfer rate: 100 Mbps
- One 10/100Base-TX RJ-45 port, maximum distance 100 m
- RJ-45 port with Auto MDI/MDI-X support and auto-negotiation
- One 100Base-FX multi-mode Fiber SC duplex port
- Fiber distance support: up to 2 km (62.5/125 or 50/125 μ m cable)
- Wavelength: 1310 nm
- Flow control
- Status LEDs for power and Link/TX for both ports
- External power adapter, 5 V DC
- Can be used stand-alone or in INTELLINET NETWORK SOLUTIONS Converter Chassis, Model 519854
- Lifetime Warranty

Specifications

STANDARDS

- IEEE 802.3 (Twisted Pair Ethernet)
- IEEE 802.3u (Twisted Pair/Fiber Optic Fast Ethernet)

GENERAL

- Media support:
 - 10/100Base-TX Cat3 or higher UTP/STP RJ-45, EIA/TIA 568
 - 100Base-FX single-mode 62.5/125 or 50/125 μ m Fiber
- Connectors:
 - One RJ-45 port, 100Base-TX
 - One Fiber SC duplex port, 100Base-FX
- Distances:
 - 2 km (62.5/125 or 50/125 μ m Fiber cable)
 - 100 m (RJ-45 cable)
- Wavelength: 1310 nm
- Certifications: FCC Class A, CE Mark

LEDs

- Power
- LINK/TX for RJ-45 port
- LINK/TX for Fiber SC port

POWER

- External power adapter, 5 V DC, 1 A
- Power consumption: 3.4 Watts (maximum)

ENVIRONMENTAL

- Metal housing
- Dimensions: 102 (L) x 74 (W) x 22 (H) mm (4 x 2.9 x 0.9 in.)
- Weight: 230 g (0.5 lbs.)
- Operating temperature: 0° to 60°C (32° to 140°F)
- Operating humidity: 10% to 90% RH, non-condensing
- Storage temperature: -20° to 90°C (-4° to 194°F)

PACKAGE CONTENTS

- Fast Ethernet Media Converter
- External power adapter
- User manual

For more information on INTELLINET NETWORK SOLUTIONS products, consult your local dealer or visit www.intellinet-network.com.


INTELLINET
NETWORK SOLUTIONS
BRINGING NETWORKS TO LIFE

Copyright © INTELLINET NETWORK SOLUTIONS

All names of products or services mentioned herein are trademarks or registered trademarks of their respective owners. Distribution and reproduction of this document, and use and disclosure of the contents herein, are prohibited unless specifically authorized.

INT-519120-DS-0706-01