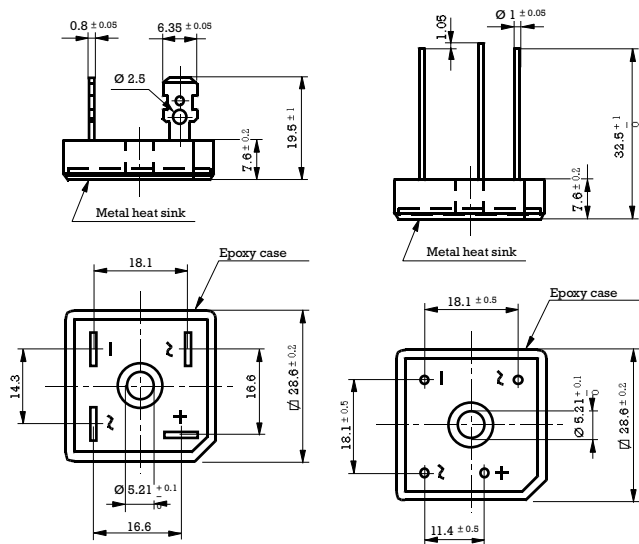


25 Amp. Glass Passivated Bridge Rectifier

Dimensions in mm.



Voltage
50 to 1000 V

Current
25 A

HYPERECTIFIER®

- Glass Passivated Junction
 - UL recognized under component index file number E130180
 - Terminals: FASTON ①
 - Terminals: WIRE LEADS ②
 - Max. Mounting Torque: 25 Kg x cm
- Lead and polarity identifications
High surge current capability

Maximum Ratings, according to IEC publication No. 134

		①	FB2500	FB2501	FB2502	FB2504	FB2506	FB2508	FB2510
		②	FB2500L	FB2501L	FB2502L	FB2504L	FB2506L	FB2508L	FB2510L
V_{RWM}	Max. peak working voltage (V)		50	100	200	400	600	800	1000
V_{RMS}	Recommended input voltage (V)		20	40	80	125	250	380	500
$I_{F(AV)}$	Max. forward current R-load: At T case = 55 °C At T case = 90 °C With Al Square Chassis (200 cm ² x 3 mm.) Tamb = 45 °C		25 A 17 A 10 A						
I_{FRM}	Recurrent peak forward current		75 A						
I_{FSM}	10 ms. peak forward current		300 A						
I^2t	I^2t value for fusing (t = 10 ms)		450 A ² sec						
T_j	Operating temperature range		– 55 to + 150 °C						
T_{stg}	Storage temperature range		– 55 to + 150 °C						

Electrical Characteristics at Tamb = 25 °C

V_F	Max. forward voltage drop per element at $I_F = 12.5$ A	1.1 V
I_R	Max. reverse current per element at V_{RWM} d.c.	5 µA
R_{thj-c}	Typical thermal resistance junction to case	1.4 °C/W
	Isolation voltage from case to leads	2500 Vac

Characteristic Curves

